



EMPOWER YOUR BUSINESS WITH HP AND WINDOWS 11 PRO





CONTENTS

Introduction	p3
Boosting productivity	p4
Harnessing AI	p5
Enhancing security	p6
Fostering sustainability	p7
Ensuring resiliency	p8
Why Servium?	p9



INTRODUCTION

Staying ahead in a crowded market requires the right tools and a forward-thinking approach to technology. With Windows 10 end of support looming just over the horizon in October 2025, it's crucial to evaluate device compatibility now to avoid risks and stay competitive.

By upgrading to HP devices with Windows 11 Pro, your workforce can work securely from anywhere, harnessing the power of AI with purpose-built devices that improve insights and efficiency.

While security patches for Windows 10 devices will continue after the end-of-support date, they'll only be available at an additional cost. Modernising today can save your business from costly consequences tomorrow.

Plus, by upgrading to the latest HP and Windows 11 Pro devices you'll reduce maintenance costs, further minimise security risks, and boost employee productivity and satisfaction.

64% of surveyed employees say they struggle with having enough time or energy to do their job.¹

But with HP and Windows 11 Pro, they're able to free up time with AI-powered features, and harness the powerful technology they need to succeed - driving an average ROI of **250%**.²

Working together, Servium, HP, and Microsoft deliver a device strategy that can help your business meet key goals, from security to AI adoption.



BOOSTING PRODUCTIVITY

89%

of employees state that outdated technology directly impacts their productivity, making it crucial to equip your team with more modern tools.³



Windows 11 Pro's intuitive interface streamlines the user experience and reduces IT support requirements.



AI-enabled video features enhance collaboration, no matter where employees are working from.



Built-in Windows 11 Copilot functionality streamlines workflows with AI assistance.



Servium training and support ensures your users are ready to get the full value of their devices from day one.

Empower your team to work smarter, not harder, with intuitive Windows 11 Pro features, HP devices built for a frictionless user experience, and Servium support to keep devices up and running, wherever your team is working from.





HARNESSING AI

The era of AI is here - your users need devices that are ready for it. AI-enhanced PCs are built not just to get the best performance from external AI tools, but to utilise this technology to improve user experience.

HP devices with Windows 11 Pro set your users up for AI success - with built-in AI tools that enhance collaboration, improve access to information, and offer intelligent assistance to keep workflows moving.



HP Presence uses AI to ensure professional-quality video conferences from anywhere.



Advanced AI-enabled features like noise reduction, autoframe, and light adjustment improve video quality even further.



Integrated Copilot support provides quick access to intelligent features, making it easier to navigate, multitask, and access AI.



Windows 11 Copilot AI helps users stay productive and get more from their devices, with key information naturally appearing in their workflows when they need it most.

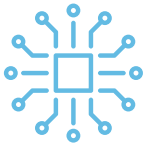


ENHANCING SECURITY

Safeguarding your business should always be a top priority. Device security should be an essential part of your cyber strategy, helping to keep users protected, and lock down sensitive business data.



Hardware-based isolation, virtualisation-based security (VBS), and hardware-enforced stack and heap protection.



HP Sure Click extends hardware-enforced isolation beyond Windows 11 Pro's Smart App Control.



HP Tamper Lock protects against physical attacks on PC internals.



HP Sure Start, the world's only self-healing BIOS, automatically recovers from firmware attacks.

HP Wolf Security provides robust, on-device security protections. Backed up by Windows 11 Pro's advanced features, your employees can work confidently - and securely - from anywhere, while contributing towards a more resilient cyber defence.





FOSTERING SUSTAINABILITY

According to PWC, [2025 is the year sustainability moves firmly onto the boardroom agenda](#).³ IT teams are increasingly expected to help drive this critical business goal, through a more sustainable approach to technology.

By choosing HP, you partner with a global leader that prioritises environmental responsibility:



Over 95%

of HP home and office printers, laptops, notebooks, displays, and workstations shipped to customers include recycled materials.⁴



HP has driven a 32%

reduction in its total fiber footprint for paper used in products and print services to counteract possible deforestation.⁴



Over 87%

of landfill-bound products are redirected to more sustainable options through HP operations.⁴

With HP devices, backed up by Servium's end-of-life device recycling services, you can drive a more sustainable future whilst providing your team with the tools they need to succeed.



ENSURING RESILIENCY

A resilient supply chain is the backbone of good device estate management, especially in an unpredictable global landscape.



HP boasts world-class supply chain management, recognised by Gartner's 2023 Supply Chain Top 25 list.



A worldwide network of manufacturing facilities, distribution centres, and logistics partners helps deliver devices across the globe.



A strategically-designed supply chain minimises the effect of disruptions, ensuring a consistent experience for you.



Suppliers are carefully vetted, with strict ethical and social responsibility standards throughout the supply chain.

HP's proactive approach to supply chain resilience means you can focus on driving your business forward, knowing that key technology supply is in good hands.



WHY SERVIUM?

Our team of elite-level professionals is ready to handle your Windows 11 deployment - whether you have 50 devices or 10,000.

As part of the Advania group - a leading global Microsoft partner - we possess unparalleled expertise in Windows 11, Copilot and the complete Microsoft ecosystem, ensuring your business makes the most of every capability.

Plus, with end-to-end lifecycle services to enhance your device rollout - from planning to asset disposal, installation to ongoing support, we can make moving to Windows 11 a breeze for your IT team, and seamless for your users.

SUPPORTING WHERE IT MATTERS MOST:



Expertise: Leverage our proven track record and Microsoft expertise for a painless switch in good time for the Windows 10 end-of-support deadline.



Tailored Delivery: Tailor your service package to fit the needs of your business - whether you need comprehensive support across the device lifecycle, or just a hand getting the initial deployment rolling.



Security & Compliance: Keep data safe with on-device security features from HP, backed up with our range of security services.

READY TO MAKE THE SWITCH TO HP DEVICES WITH WINDOWS 11 PRO?

Get in touch with the Servium team today at engage@servium.com to find out more.



Sources

1. HP (2022). Go Beyond: 2022 HP Sustainable Impact Report. <https://h20195.www2.hp.com/v2/getpdf.aspx/c08636600.pdf>
1. Forrester (2022). The Total Economic Impact Of Windows 11 Pro Devices. https://cdn-dynmedia-1.microsoft.com/is/content/microsoftcorp/microsoft/final/en-us/microsoft-product-and-services/windows/windows-11/ai/Forrester_BDM.pdf
1. PWC (2025). Five trends shaping the sustainability agenda in 2025, and the actions you can take now. <https://www.pwc.co.uk/services/esg/five-trends-shaping-sustainability-agenda-in-2025.html>
1. Microsoft (2023). Will AI Fix Work? Work Trend Index Annual Report. <https://www.microsoft.com/en-us/worklab/work-trend-index/will-ai-fix-work>